



CLUB DE RECREIO

NOTICE

TEMPORARY PARTIAL CLOSURE OF CARPARK FOR STATUTORY TREE MAINTENANCE

Date: 8th April 2026

Dear Valued Members,

Please be advised that, in compliance with directives from the relevant government authorities, the Club will undertake essential arboricultural maintenance works on Monday, 20th April 2026. To ensure the safe and efficient execution of these works, the Club carpark will be temporarily and partially suspended on this date.

Affected Parking Zones:

- *Upper Level: Parking spaces No. 1–14 will be restricted from the morning of 20th April. Subject to operational progress, spaces No. 1–8 may be reinstated for member use after 14:00 (2:00 PM).*
- *Lower Level: Parking spaces No. 15–25 and 45–51 will remain closed for the entire day.*

Members are kindly requested to utilize the remaining available parking spaces or make alternative parking arrangements during the affected period. Please also observe all temporary signage and barrier tape and follow the instructions from club staff while parking in the club.

The safety and well-being of our members, staff, and visitors remain the Club's paramount priority. These temporary restrictions have been implemented in strict adherence to statutory safety guidelines to mitigate potential hazards associated with the scheduled tree maintenance.

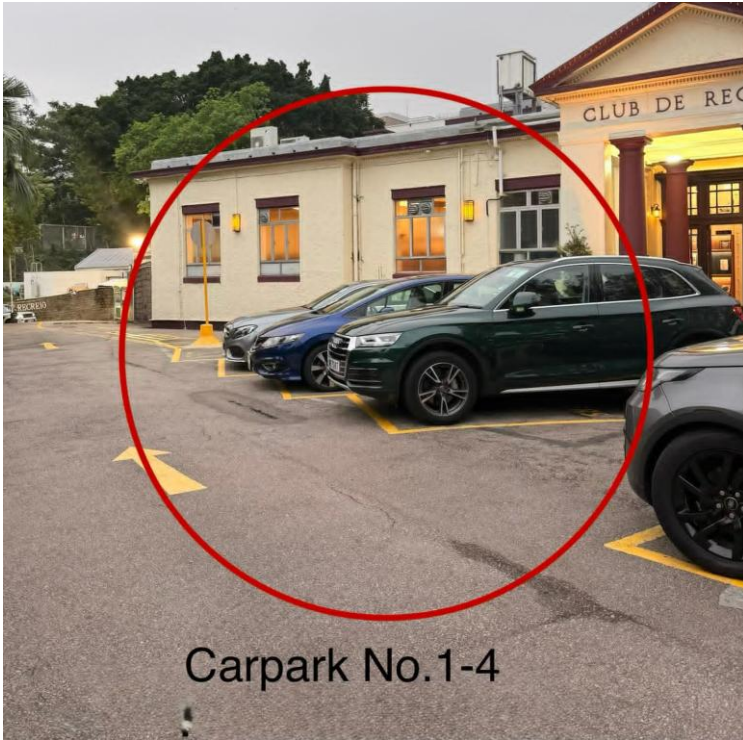
For your convenience, please refer to the attached photographs indicating the restricted zones.

We sincerely appreciate your understanding, patience, and continued cooperation as we undertake these necessary safety enhancements. Should you require any further clarification or assistance, please contact the Club Management Office.

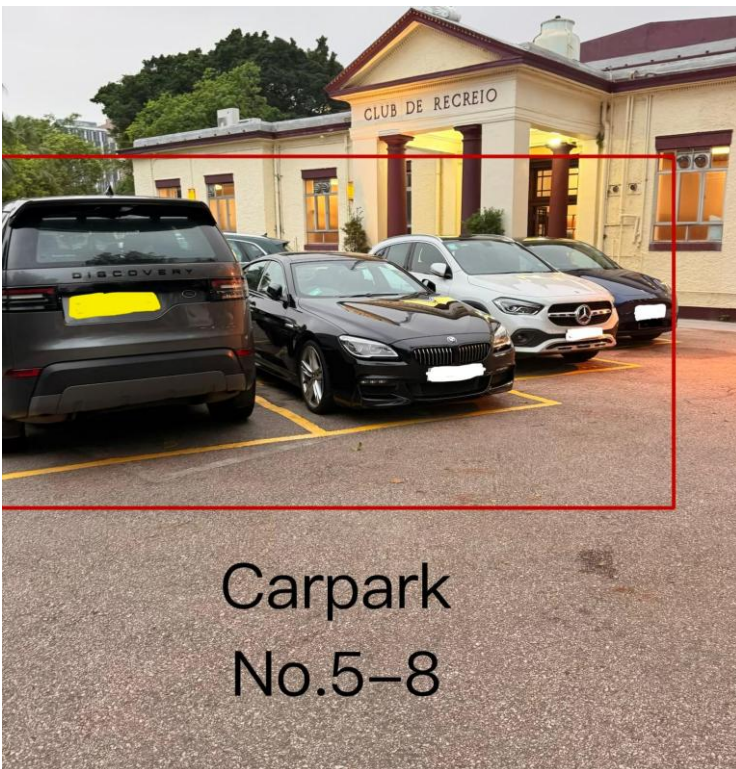
Thank you for your continued support.

Yours faithfully,
Club Management Office

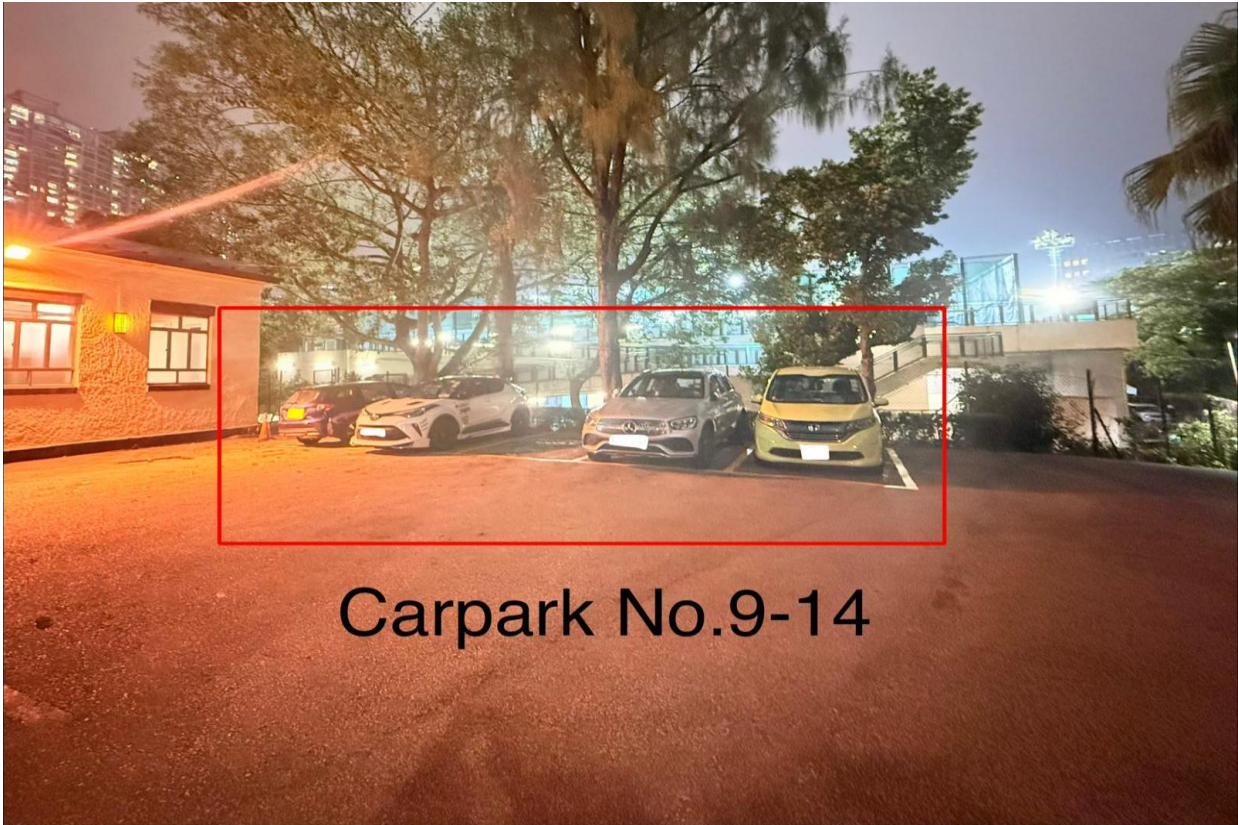
C.C. The Carpark Convenor, Mr. Dino Au-Yeung



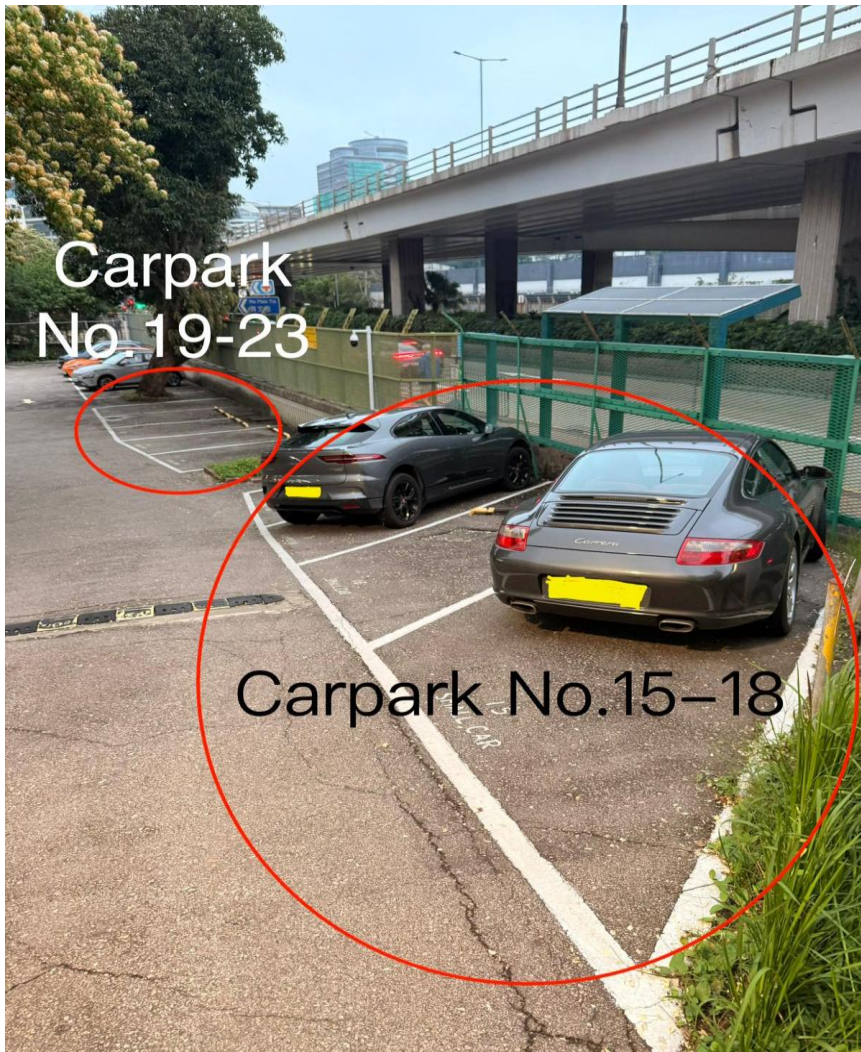
Carpark No.1-4



Carpark
No.5-8

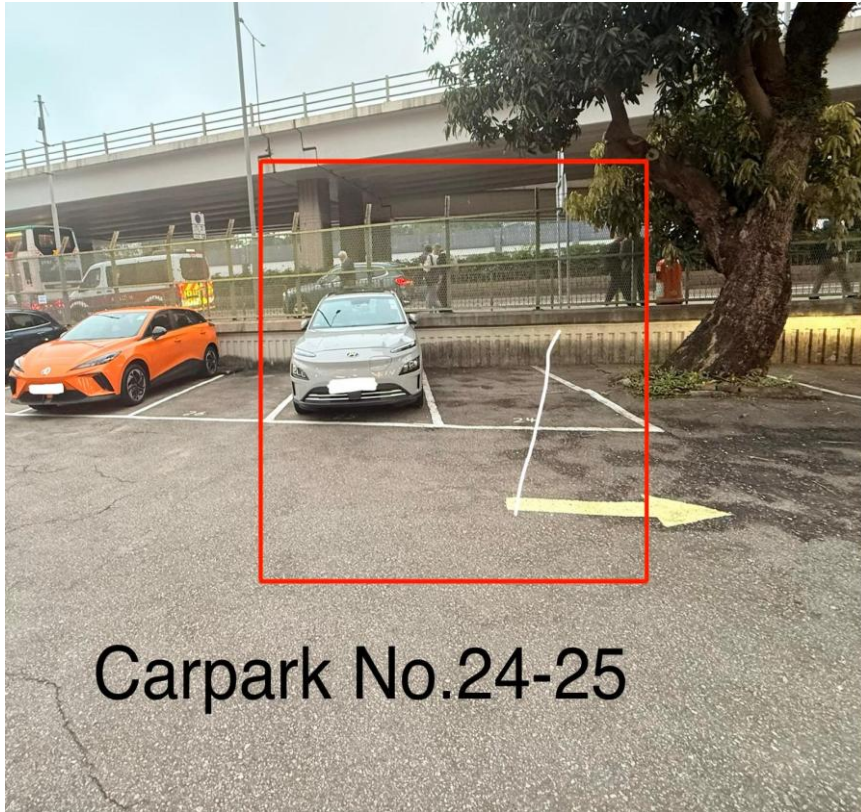


Carpark No.9-14

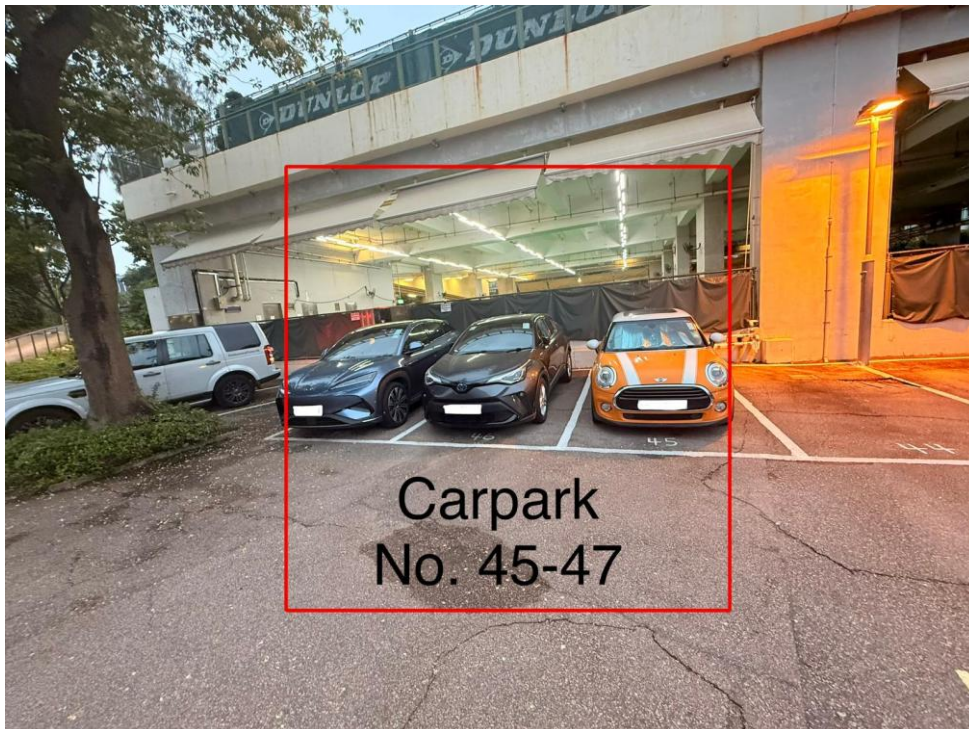


Carpark
No.19-23

Carpark No.15-18



Carpark No.24-25



Carpark
No. 45-47

